

KMUH

<https://www.kmuh.org.tw>



高雄醫學大學附設中和紀念醫院

Kaohsiung Medical University Chung-Ho Memorial Hospital

807高雄市三民區自由一路100號

No.100 , Tzyou 1st Road Kaohsiung 80756 Taiwan(R.O.C)

TEL : 07-3121101 | FAX : 07-3213931



教學 服務 研究



高雄醫學大學 | 附設中和紀念醫院



醫院簡介

KMUH 2025

Kaohsiung Medical University
Chung-Ho Memorial Hospital

深化永續經營能量 建構共好永續未來



高雄醫學大學附設中和紀念醫院創立迄2025年已屆68年，在董事會的治理、歷任校、院長、高醫全體同仁的努力和各界先進的支持下茁壯成長，才有今日的規模與成就。本醫院作為一所大學醫院和醫學中心，不僅肩負著醫學教育與醫療服務的雙重任務，更是醫療創新和技術進步的先驅者。感謝全體同仁的辛勤付出，使本醫院在社會中發揮其應有的影響力和貢獻。

而在全球經濟衰退陰霾下，醫療照護領域也同樣面臨醫療成本壓力，種種困境卻未減緩醫療產業的創新發展，我們需要以穩健永續的經營方式，持續聚焦技術創新與智慧醫療、高齡化社會需求、國際市場拓展、特色醫療發展，並積極配合學校成為研創型醫學大學，提升「創新研究與產學合作」，深耕「特色教學與人才培育」，進而發揮「社會責任與影響力」，是本醫院未來發展的核心與任務。

高醫長年發展尖端特色醫療，也有諸多績效與成果。今後，仍要聚焦特色，例如：移植醫學、再生醫學、精準醫療(如細胞治療)以及各項介入性治療，如微創、無創特色手術等，在不斷的技術精進中持續推廣於國內外，成為高醫醫療亮點。此外，隨著科技與醫療發展的趨勢，逐步導入智慧醫療與數位轉型於臨床場域，藉以提升醫療品質、創造病患有感價值醫療；並特別針對細胞治療與NGS次世代定序發展精準醫療。同時，整合各醫療單位以規劃腫瘤醫學部和重症醫學部，建構以病人為中心且更有溫度的全人醫療照護系統，亦在各項院務政策的推上持續確保環境保護、社會責任、公司治理等以創造友善職場提升員工向心力，帶動醫院成長、創造更多社會福祉以達永續經營目標。

高雄醫學大學附設中和紀念醫院
院長

王 照 元
Jaw-Yuan Wang 教授

Deepen sustainable energy and build a common and sustainable future

Kaohsiung Medical University Chung-Ho Memorial Hospital (KMUH) will mark its 68th anniversary in 2025 since its establishment. Its current scale and achievements have been made possible through the leadership of the board of directors, the dedication of successive presidents, deans, and all colleagues, as well as the support of leaders from all sectors. As a university hospital and a medical center, KMUH not only fulfills the dual missions of medical education and healthcare services but also leads medical innovations and technical advancements. Thanks to the hard work and commitment of all colleagues, KMUH has been able to exert its expected influence and make meaningful contributions.

Amidst the shadow cast by the global economic recession, the healthcare sector is also under pressure due to rising medical costs. Despite these difficulties, the healthcare sector continues to make process in innovative development. To navigate these challenges, we must adopt a steadfast and sustainable operational model, focusing on technical innovation and smart healthcare solutions, addressing the needs of an aging society, expanding into the international market, enhancing specialty healthcare services, and fostering close collaboration with the university to make it a research and development-driven institution. It is the hospital's core mission for future development to increase innovative research and strengthen industry-academia partnerships, as well as deepen specialty education and cultivate talent. In doing so, we will fulfill our social responsibility and amplify our influence. KMUH has spent years developing cutting-edge specialty healthcare services, achieving significant milestones and outcomes. Looking ahead, we remain committed to advancing our efforts in specialized areas, such as transplantation medicine, regenerative medicine, and precision medicine (e.g., cell therapy), as well as interventional treatments, including minimally invasive and non-invasive procedures. By making constant technical advancements and promoting them both locally and internationally, these services will become the hospital's defining strengths. In response to emerging trends in technology and medicine, we will progressively integrate smart healthcare and digital transformation practices into clinical settings to enhance healthcare quality and deliver value-based care for optimal patient experience. Additionally, we will advance precision medicine, with a focus on cell therapy and next-generation sequencing (NGS). In the meantime, we will integrate resources from various medical units to plan the establishment of the Department of Oncology and the Department of Critical Care Medicine, aiming to create a patient-centered and compassionate holistic healthcare system. Alongside implementing hospital affairs and policies, we will also fulfill our responsibilities in environmental, social, and governance (ESG) areas. This will help create a supportive workplace that fosters greater unity among staff, drives the growth of the hospital, and promotes social welfare.

高雄醫學大學附設中和紀念醫院
院長

王照元
Jaw Yuan Wang 教授

KMUH 2025

目錄 | TABLE OF CONTENTS

01

綜覽高醫醫療體系

Overview of KMUH Healthcare System

03

認識高醫

About KMUH

05

特色醫療及醫療品質之注重

Specialty Healthcare and Focusing on Healthcare Quality

15

人才培育創新研發

Talent Cultivation and R&D Innovations

23

善盡社會責任

Fulfilling Social Responsibilities

27

國際交流與合作

International Exchanges and Collaborations

31

獲獎榮譽

Awards and Honors

綜覽高醫醫療體系

Overview of KMUH Healthcare System

高雄醫學大學

1954年創立高雄醫學院
1999年改制高雄醫學大學
共7學院(醫學院、口腔醫學院、藥學院、護理學院、健康科學院、生命科學院、人文社會科學院)

Kaohsiung Medical University

Established in 1954 as Kaohsiung Medical College
Renamed Kaohsiung Medical University in 1999
Comprises 7 colleges: College of Medicine, College of Dental Medicine, College of Pharmacy, College of Nursing, College of Health Sciences, College of Life Science, and College of Humanities and Social Science



高雄醫學大學附設中和紀念醫院

正式營運：1957年
評鑑等級：醫學中心
床數：1,720床

Kaohsiung Medical University Chung-Ho Memorial Hospital

Officially in operation: 1957
Rating level: Medical center
Number of beds in wards: 1,720



高雄醫學大學創設於1954年(高雄醫學院)，為第一所台灣人籌設創建的大學院校，是台灣第一所私立醫學院；1999年改名為高雄醫學大學時，亦是台灣第一所私立醫學大學，經過68年的投入，體系發展至今擁有四家附屬醫療機構，分別為高雄醫學大學附設中和紀念醫院、高醫岡山醫院、市立小港醫院以及市立旗津醫院。高醫醫療體系堪為南台灣最大且最完整的醫療服務及醫學教育體系。

Established in 1954 as Kaohsiung Medical College, Kaohsiung Medical University is the first tertiary educational institution funded and built by Taiwanese, as well as the first private medical college in Taiwan. Renamed Kaohsiung Medical University in 1999, it became the first private medical university in the country. With 68 years of dedication, the KMUH healthcare system now comprises four affiliated medical institutions: Kaohsiung Medical University Chung-Ho Memorial Hospital, Kaohsiung Medical University Gangshan Hospital, Kaohsiung Municipal Siaogang Hospital, and Kaohsiung Municipal Cijin Hospital. The KMUH healthcare system is the largest and most comprehensive healthcare service and medical education network in southern Taiwan.

高雄市長小港醫院

正式營運：1998年
評鑑等級：區域教學醫院
床數：565床

Kaohsiung Municipal Siaogang Hospital

Officially in operation: 1998
Rating level: Regional education
Number of beds in wards: 565

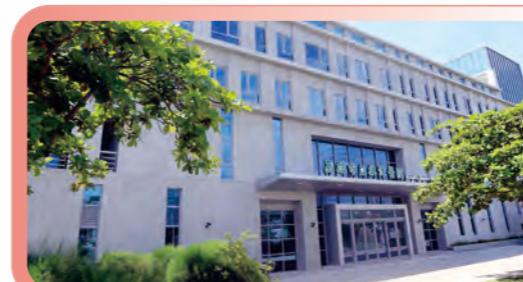


高雄市長旗津醫院

正式營運：2014年
評鑑等級：地區醫院
床數：48床

Kaohsiung Municipal Cijin Hospital

Officially in operation: 2014
Rating level: Regional hospital
Number of beds in wards: 48



高雄醫學大學附設高醫岡山醫院

正式營運：2024年
床數：521床

Kaohsiung Medical University Gangshan Hospital (Preparing)

Officially in operation: 2024
Number of beds in wards: 521



認識高醫

About KMUH

宗旨

- 教學 以學習者為中心的典範跨領域教學
- 服務 以病人為中心的卓越全人健康照護
- 研究 以臨床為中心的頂尖轉譯醫學研究

願景

- 追求卓越，成為國際一流之大學醫院

核心價值

- 關懷創新 追求卓越、以高醫為榮

目標

- 提供全人照護、培育優秀人才、發展卓越科技、成為民眾最信賴之首選醫學中心



2016、2019、2022連續通過JCI國際醫院評鑑認證
南台灣首家通過JCI評鑑的醫學中心



總床數
Total No. of Beds
1,720



臨床醫療科
clinical departments
(including sub-specialties)
63

整合性醫療中心
multidisciplinary centers
16



員工數
No. of Employees
4,800+



113年總門診人次
2024 Number of outpatient visits
2,056,700

113年總急診人次
2024 Number of emergency visits
81,900

113年總住院人次
2024 Number of inpatient admissions
81,000



醫聯盟合作
primary medical clinics
401家

Mission

Teaching : Learner-centered multidisciplinary teaching
Service : Patient-centered, holistic health care
Research : Clinical-centered translational medical research

Vision

Pursuing excellence to become an outstanding affiliated hospital of medical university

Core Value

Compassion, Innovation, Excellence, Honor

Goal

Provide holistic patient care, cultivate talents, and develop outstanding technology in order to become the most reliable medical center in the country



Our hospital was accredited by the Joint Commission International(JCI) in 2016, 2019 and 2022.

The first medical center with JCI accreditation in Southern Taiwan.

特色醫療服務

Specialty Healthcare Services



整合性居家靜脈營養照護團隊

Integrated Home Parenteral Nutrition Care Team



本醫院推展居家靜脈營養照護有26年的經驗，協助病人在家接受靜脈營養輸液，且能自行更換點滴管路及營養輸液，以補充日常所需的營養，成效相當顯著，為國內首家獲得國家品質標章認證之醫院，並率先驅成立亞太區居家靜脈營養治療培訓中心，提升醫療人員在該領域訓練的系統化，更於2023年榮獲SNQ金獎肯定。

KMUH has 26 years of experience in promoting home parenteral nutrition care. It has made significant strides in helping patients administer nutrition via intravenous infusion at home and change catheters and nutritional infusions on their own to meet their daily nutritional needs. As the first hospital to receive the Symbol of National Quality (SNQ) certification in this area, KMUH has established the Asia Pacific Home Parenteral Nutrition Training Center to standardize training for healthcare personnel. Its dedication in this field earned the hospital the SNQ Gold Award in 2023.



神經肌肉疾病之整合照護

Integrated Care for Neuromuscular Disorders

本醫院於2011年成立國內首創神經肌肉疾病跨領域照顧團隊暨開辦神經肌肉疾病整合門診，確立診斷並整合照顧國內神經肌肉疾病患者；除結合肌肉病理及特殊分子診斷以達到更為精準之疾病診斷外，在跨領域團隊長期追蹤與照顧下，達到減緩病程、降低並預防併發症的發生，並提升生活品質。照顧團隊自成立以來，共獲得3項國家品質標章認證、國家品質標章銅獎，並且於2024年獲得台灣健康永續獎之社會共融領袖獎肯定。此外，團隊積極推動脊髓肌肉萎縮症用藥治療，2023年及2024年分別完成全台首例及第三例基因治療之用藥，目前有全台最多脊髓肌肉萎縮症患者於本院接受藥物治療與追蹤評估。

In 2011, KMUH established Taiwan's first cross-disciplinary care team, along with an integrated outpatient clinic, for neuromuscular disorders to provide comprehensive diagnosis and care for domestic patients with such disorders. The integrated outpatient clinic combines muscle pathology with specialized molecular diagnostics to achieve more precise diagnoses. The cross-disciplinary care team is responsible for long-term follow-up and care to slow the disease progression, prevent complications, and improve patients' quality of life. Since its establishment, the care team has received three SNQ certifications, the SNQ Bronze Award, and the Social Inclusion Leadership Award at the 2024 Taiwan Health Sustainability Awards. In addition, the team has been actively promoting medication treatments for spinal muscular atrophy. It successfully completed Taiwan's first and third cases of gene therapy medication in 2023 and 2024, respectively. The hospital currently has the highest number of spinal muscular atrophy patients receiving medication and undergoing follow-up assessments.





卓越機器人手術中心

Center for Excellence in Robotic Surgery

本醫院為持續提升醫院醫療品質之國際競爭力，於2021年首次申請美國SRC (Surgical Review Corporation)卓越機器人手術中心認證 (Center of Excellence in Robotic Surgery, COERS)，於2024年3月再次提出認證申請，委員於評審過程大力肯定機器人手術醫療團隊之表現，10月通過認證，同時有5位醫師獲得Surgeons of Excellence in Robotic Surgery。本醫院於2024年1月設置機械手臂手術中心，整合相關資源、創新機械手臂手術相關服務，領導有關之教學與研發。除通過COERS認證，亦為國際原廠認證大腸直腸癌手術觀摩看刀中心，全國首家也是唯一國際雙認證醫學中心，持續致力於提供優質的醫療照護品質而邁進。

To further enhance its international competitiveness in healthcare quality, KMUH applied for certification as a Center of Excellence in Robotic Surgery (COERS) from the U.S. Surgical Review Corporation (SRC) for the first time in 2021. It resubmitted its application in March 2024. During the evaluation process, the review committee highly recognized the outstanding performance of KMUH's robotic surgery medical team. In October, the hospital successfully passed the certification, and five of its surgeons were honored as Surgeons of Excellence in Robotic Surgery. In January 2024, KMUH established the Robotic Surgery Center to integrate resources, innovate robotic surgery services, and lead education, research, and development in this field. In addition to COERS, KMUH is also an internationally certified observation center for colorectal cancer surgery. As the first and only medical center in Taiwan to hold two international certifications, KMUH will continue to strive for excellence in healthcare quality.



色素性疾病治療中心

Pigmentary Disorder Treatment Center

本醫院成立全國第一個「色素性疾病治療中心」，專注於色素性疾病治療之創新研發和臨床問題的解決，至今已累積數千例色素性疾病病患個案之經驗。中心具有色素性疾病臨床服務窗口及治療效果資料庫，持續舉辦病友會、擴充治療儀器設備、建立標準治療流程、整合臨床與研究資源以提升研究量能，已在國際著名醫學期刊上發表了多篇相關研究論文，並榮獲SNQ國家品質標章認證及國家醫療品質獎傑出醫療獎金獎。

KMUH has established Taiwan's first Pigmentary Disorder Treatment Center, focusing on innovative research, development, and clinical solutions for treating pigmentary disorders. The center has gained extensive experience by treating thousands of patients with such disorders. The center has established a clinical service window and a treatment outcomes database for pigmentary disorders. It continues to organize patient support group activities, expand treatment equipment, establish standard treatment procedures, and integrate clinical and research resources to enhance research capacity in this field. The center has published several papers on these disorders in prestigious international medical journals and has received SNQ certifications, along with the Gold Award for Outstanding Healthcare at the National Healthcare Quality Awards.



CAR-T細胞治療

CAR-T Cell Therapy

本醫院是南台灣地區唯一可執行CAR-T細胞治療之醫學中心，治療團隊正持續推展CAR-T細胞治療之臨床應用及臨床試驗，全力為病患提供全新尖端醫療的照護。另為積極推動及導入細胞治療的創新研究與臨床應用，高醫與瑞寶生醫公司合作，斥資建構符合標準之細胞治療實驗室，做為基礎及臨床研究之平台。同時也與學研界及其他國內外生技廠商合作，研發新型態細胞治療方案，執行基礎及臨床前期研究，並推展以細胞治療為基礎之各期臨床試驗，促進國內生技產業發展。另也持續進行特管辦法核准之細胞治療計畫，提供癌症或其他病患新的治療選擇。



KMUH is the only medical center in southern Taiwan authorized to perform CAR-T cell therapy. The treatment team is currently advancing the clinical applications and trials of CAR-T cell therapy, aiming to provide cutting-edge healthcare to patients. To advance innovative research and clinical applications of cell therapy, KMUH has partnered with Raypal Biomedical Co., Ltd., making significant investments in the construction of a cell therapy laboratory designed to meet industry standards and serve as a platform for both fundamental and clinical research. It has collaborated with the academic research community and both local and international biotechnology companies in the research and development of new cell therapy solutions, fundamental and preclinical research, and cell therapy-based clinical trials at various stages, so as to facilitate the development of domestic biotechnology industry. It has also been proceeding with cell therapy projects approved under the Regulations Governing the Application of Specific Medical Techniques and Medical Devices, striving to provide new treatment options for patients with cancer and other diseases.





高醫智慧醫療里程碑 KMUH Smart Healthcare Milestones



本醫院近年成立了「體系智能醫療推動辦公室」，致力於實現本校「未來高醫，引領未來」的願景，並積極聚焦AI智慧醫療，目前已以病人就醫旅程串聯「智慧門診照護」、「智慧住院照護」、「智慧急診照護」、「智慧手術照護」及「智慧運營管理」等五大構面成果，並擴大應用至偏鄉遠距醫療、生成式護理紀錄與醫護交班紀錄協作及營運管理等多個領域的人工智慧平台，透過AI輔助，我們能夠協助醫護人員精準預測疾病高風險，藉以提升醫療品質與病人安全。另一方面，本醫院於2023年在南台灣率先通過HIMSS EMRAM Stage 6認證，在2024年第25屆NHQA國家醫療品質獎中，高醫於智慧醫療類競賽再創佳績，不僅再度榮獲「智慧醫院全機構標章」，更是南台灣唯一再度榮獲智慧醫院全機構標章的醫療機構，並囊括智慧醫療類優良標章、標章、ESG特別獎等多項殊榮共計11項。

In recent years, KMUH has reaffirmed its commitment to the vision of "Future KMUH, Leading the Way Forward" by establishing the Project Management Office for Intelligent Healthcare. The hospital has been actively promoting AI-driven smart healthcare initiatives, integrating the patient journey across five key areas: "smart outpatient care," "smart inpatient care," "smart emergency care," "smart surgical care," and "smart operations management." AI technology has also been applied to platforms such as telemedicine for remote areas, generative nursing records, medical and nursing handover records, and operations management. With the support of AI, KMUH enhances the ability of healthcare professionals to accurately identify high-risk patients, thereby improving the quality of care and ensuring patient safety. In 2023, KMUH became the first medical institution in southern Taiwan to achieve Stage 6 certification on the Electronic Medical Record Adoption Model (EMRAM) from the Healthcare Information and Management Systems Society (HIMSS). In 2024, KMUH continued to excel in the Smart Healthcare Category at the 25th National Healthcare Quality Awards. It was the only medical institution in southern Taiwan to once again receive the Smart Hospital certification and garnered a total of 11 certifications and awards in the Smart Healthcare Category, along with the ESG Special Award.



醫療品質之注重

Shaping a Culture of Comprehensive Quality

全面品質文化的塑造

Shaping a Culture of Comprehensive Quality

本醫院在推動醫療品質與病人安全活動中，具有雙向回饋與溝通機制，自上而下擬定年度醫療品質暨病人安全工作計畫，下達至各單位執行行動方案；自下而上由各單位及跨部門共同執行行動方案並蒐集相關醫療品質指標，每月於相關會議報告，並提報至學校行政會議、董事會，以確保管理架構之雙向回饋與溝通有效性。

本醫院每年搭配醫策會訂定之病安週主題，辦理大型民眾參與活動-病人安全週，希冀透過大型活動之辦理，鼓勵民眾積極參與病人安全，建立民眾正確的就醫觀念，並鼓勵病人回應醫療人員的提問與主動反應自己或家人的特殊狀況，透過『問清楚、講明白、勤發問、作筆記』，減少醫療人員與病人、家屬及民眾間的溝通不良，拉近醫院與民眾間距離，提升正向醫病夥伴關係。

KMUH has established a two-way feedback and communication mechanism to ensure healthcare quality and patient safety. From the top-down perspective, KMUH has formulated an annual work plan for healthcare quality and patient safety, which serves as the guiding framework for the action plans developed by all units and cross-departmental teams. From the bottom-up perspective, all units and cross-departmental teams report the outcomes of their implemented action plans and the collected healthcare quality indicators at monthly meetings. This information is subsequently submitted to the administrative meeting and the board of directors of the university to ensure the effectiveness of the two-way feedback and communication mechanism within the management framework.

KMUH organizes large-scale events annually in line with the theme set by the Joint Commission of Taiwan for Patient Safety Week to engage both the public and patients. The aim is to raise awareness about patient safety and proper concepts of seeking medical care, as



well as to encourage patients to actively respond to healthcare personnel's questions and report specific conditions concerning themselves or their family members. Through the practices of "asking clearly, explaining thoroughly, asking proactively, and taking notes diligently," KMUH aims to minimize communication gaps among healthcare personnel, patients, families, and the public, thereby bridging the distance between the hospital and the community and fostering a positive doctor-patient relationship.

疾病照護品質認證

Certifications for Disease Care Quality

以醫療院所角度思考，建立疾病照護團隊，期望透過參與認證凝聚團隊共識、促進跨科整合，使團隊在以「人」為中心的基礎下，彼此合作，進而提升團隊士氣，展現醫療機構之醫療特色。本醫院於2021年至2024年取得共14項疾病照護品質認證，為南臺灣醫療院所中獲得最多認證項目的醫院，包含



創傷性腦損傷照護品質認證、心衰竭照護品質認證、疼痛照護品質認證、冠狀動脈照護品質認證、氣喘照護品質認證、慢性阻塞性肺病照護品質認證、失智症照護品質認證、頭頸癌照護品質認證、糖尿病照護品質認證、關節置換照護品質認證、腦中風照護品質認證、乳癌照護品質認證、腎臟病照護品質認證及小兒髖關節發育不良照護。

KMUH has established disease care teams from the perspective of a medical institution and actively participates in certifications to promote team unity and foster cross-sectoral integration. The goal is to encourage teams to adopt a human-centered mindset, collaborate effectively, and enhance team morale, ultimately embodying the core values and strengths of KMUH as a whole. Between 2021 and 2024, KMUH earned a total of 14 disease care quality certifications, making it the hospital in southern Taiwan with the highest number of certifications. These certifications include those for traumatic brain injury care quality, heart failure care quality, pain care quality, coronary artery care quality, asthma care quality, chronic obstruction pulmonary disease care quality, dementia care quality, head and neck cancer care quality, diabetes care quality, joint replacement care quality, stroke care quality, breast cancer care quality, renal disease care quality, and care quality for developmental dysplasia of the hip in children.

人才培育創新研發

Cultivating Talents and Innovation

學術研究

Academic Research

本醫院在推動醫療品質與病人安全活動中，具有雙向回饋與溝通機制，自上而下擬定年度醫療品質暨病人安全工作計畫，下達至各單位執行行動方案；自下而上由各單位及跨部門共同執行行動方案並蒐集相關醫療品質指標，每月於相關會議報告，並提報至學校行政會議、董事會，以確保管理架構之雙向回饋與溝通有效性。



本醫院每年搭配醫策會訂定之病安週主題，辦理大型民眾參與活動-病人安全週，希冀透過大型活動之辦理，鼓勵民眾積極參與病人安全，建立民眾正確的就醫觀念，並鼓勵病人回應醫療人員的提問與主動反應自己或家人的特殊狀況，透過『問清楚、講明白、勤發問、作筆記』，減少醫療人員與病人、家屬及民眾間的溝通不良，拉近醫院與民眾間距離，提升正向醫病夥伴關係。

Aiming to become a benchmark center of excellence in clinical research, KMHU has established the Department of Medical Research. The department focuses on patient-centered translational medicine, strengthening the connection between genetic bases and pathogenic mechanisms to enhance the hospital's overall research, development, and innovation capabilities. By integrating hardware and software across the research process, the department offers all colleagues access to research venues, equipment, consultation and guidance services, and core technology platforms. It has established centrally managed and preserved hospital-wide human biobanks, along with research-related databases and statistical analysis collaboration services. Additionally, the department provides subsidies for research projects and scholarships for research publications.

學術研究

Academic Research



本醫院為能推動及提昇之醫學研究水準並獲得具體研究成果，推動了各項研究輔導措施：設置院級研究型主治醫師，強化院級研究型主治醫師功能，輔導各臨床科部進行研究；設置醫學研究人員協助臨床科醫師及醫事人員進行研究；專門提供研究剛入門之醫師及非醫師人員輔導型研究計畫；設置研究社群鼓勵學校教師、本醫院之臨床醫師及醫事職類人員進行學術研究交流，落實基礎與臨床研究整合；強化高醫醫療體系人體生物資料庫；建置校院臨床研究資料庫與共享機制。本醫院不僅為高屏區醫學中心發表於SCIE/SSCI學術期刊論文篇數第1名，亦為南台灣醫學中心學術期刊論文發表第1名。

KMHU has introduced a range of research support measures to enhance the quality of medical research and deliver tangible outcomes. For example, it has designated hospital-level research-focused attending physicians and strengthened their role in guiding clinical departments in research activities. Other initiatives include assigning medical research personnel to assist clinical physicians and healthcare staff in conducting research; providing guidance-oriented research projects to physicians and non-medical personnel who are new to research; establishing research communities to promote academic exchange among KMHU faculty, KMHU clinical physicians, and healthcare staff; integrating fundamental and clinical research; enhancing the human biobank system across KMHU; and establishing a data-sharing mechanism between the university and hospital clinical research databases. KMHU ranks first in the Kaohsiung-Pingtung area in the number of papers published in SCIE and SSCI academic journals and first in southern Taiwan in the total number of academic papers published.

教學儀錶板i-KASA Teaching Dashboard i-KASA



本醫院整合知識(Knowledge)、態度(Attitude)、技能(Skill)、覺知(Aware)及六大核心能力，發展智慧(Intelligence)教學儀錶板(簡稱i-KASA)，視覺化呈現教與學之動態，涵蓋從臨床實習到住院醫師的整個過程。此開發至優化成果獲得財團法人醫院評鑑暨醫療品質策進會第二十一、二十五屆智慧醫療類解決方案組之教學領域標章。

KMUH has integrated knowledge, attitude, skills, awareness, and six core competencies to establish an intelligent teaching dashboard known as i-KASA. The system visualizes teaching and learning, covering the entire process from clinical internship to physician residency. The development and optimization of the dashboard earned the hospital awards in the Smart Solution Group: Teaching in the Smart Healthcare Category at the 21st and 25th National Healthcare Quality Awards organized by the Joint Commission of Taiwan.

推動醫事職類EPAs師資培訓 與教學成效

Promoting Teacher Training and Teaching Effectiveness for EPAs across Healthcare Professional Categories

本醫院自109年起推動「可信任專業活動」(EPAs)於醫事職類，並透過種子教師培育與跨機構師資培訓，逐步建立EPAs的專業框架和共識。為了全面提升臨床教師的教學能力，本醫院積極推動以勝任能力為導向之醫學教育(CBME)的教學實務工作坊，並推薦臨床教師參加外部機構的CBME師資培訓，促進跨機構的知識共享與經驗交流。自推動以來，EPAs已成功應用於本醫院11個醫事職類的二年期新進人員訓練與評估，並且9個職類導入臨床能力委員會(CCC)進行總結性評估。

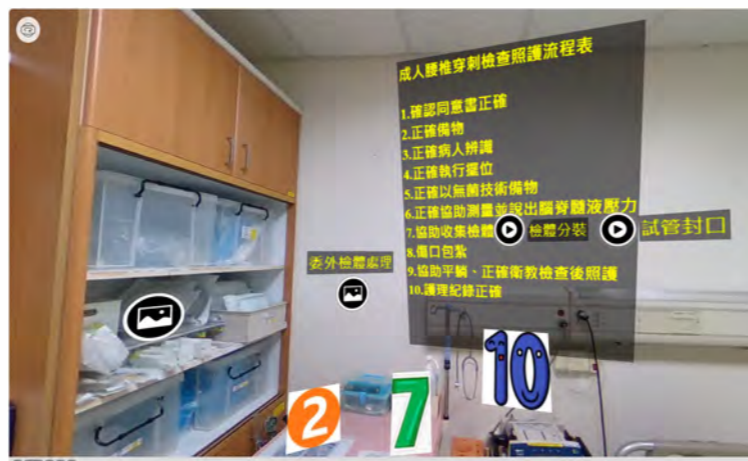


KMUH has been promoting the implementation of Entrustable Professional Activities (EPAs) across healthcare professional categories since 2020, gradually establishing the professional framework and consensus for EPAs through seed teacher training and cross-institutional teaching training. To enhance the overall teaching skills of clinical teachers, KMUH has been actively organizing workshops on Competency-Based Medical Education (CBME) and encouraging clinical teachers to participate in external CBME training programs to promote cross-institutional knowledge sharing and experience exchange. Thus far, the hospital has successfully applied EPAs to the training and assessment of PGY-2 personnel across 11 healthcare professional categories and has established Clinical Competency Committees (CCCs) to conduct summative evaluations in 9 healthcare professional categories.



模擬醫學與數位科技整合之創新教育 Innovative Education Integrating Medical Simulation and Digital Technology

因應數位醫療時代的來臨，創新醫學教育技術已成為培育新世代醫療人才的重要基石。虛擬實境(Virtual Reality, VR)臨床教學系統結合沉浸式技術，不僅建構安全且高度可控的學習環境，更能透過全景式互動與第一人稱視角，讓學員在高擬真度的臨床情境中反覆演練，有效培養專業素養與臨床思維。同時，精密的3D列印技術更進一步深化臨床教學內涵，透過製作高解析度的人體骨骼結構與器官模型，提供手術前模擬規劃、臨床技能訓練及病人衛教等多元應用。結合VR、3D列印及多媒體等新世代技術，建立個人化學習進程，突破傳統教學資源限制，實現數位化醫學教育的創新發展，為醫療教育開創更卓越的學習典範。



In the era of digital health, innovative medical education technologies have become the cornerstone for cultivating a new generation of medical talent. Our virtual reality clinical teaching system incorporates immersive technology to provide students with a safe and highly controlled learning environment. Through interactive panoramas and a first-person perspective, students can repeatedly practice in high-fidelity clinical settings, effectively developing their professionalism and clinical thinking skills. Further enriching the teaching content is advanced 3D printing technology, which provides high-resolution models of human bone structures and organs for such diverse purposes as pre-surgical preparation, clinical skills training, and patient health education. By combining VR, 3D printing, and multimedia technologies, we empower students to create personalized learning processes, overcome the limitations of traditional educational resources, drive digitalization and innovation in medical education, and establish an exemplary learning model for healthcare education.

模擬醫學與數位科技整合之創新教育 Innovative Education Integrating Medical Simulation and Digital Technology

本醫院致力建構卓越臨床模擬教學中心，配置全方位高擬真醫療訓練設備，包含最新世代電子模擬病人系列(SimMan成人模擬系統、SimMother產婦模擬系統、SimNewB新生兒模擬系統)、腹腔鏡手術模擬系統、超音波模擬系統，以及消化道與支氣管內視鏡模擬系統(GI-BRONCH Mentor)等先進教學設備。為實踐以病人安全為核心的醫療品質，規劃建置完整臨床模擬教學場域，涵蓋模擬手術室、模擬產兒室及模擬病房等專業訓練空間，結合系統性的師資培訓與先進智慧互動擬真系統，不僅強化醫療人員的專業技能，更著重培養跨領域團隊合作與溝通能力。

Dedicated to establishing itself as a center of excellence in clinical simulation teaching, KMUH has introduced comprehensive high-fidelity medical training equipment, including the latest generation of electronic patient simulators (the SimMan adult simulation system, SimMom maternal simulation system, and SimNewB neonatal simulation system), a laparoscopic surgery simulation system, an ultrasound simulation system, and the GI-BRONCH Mentor for gastrointestinal and bronchial endoscopy training. To achieve healthcare quality centered on patient safety, KMUH has designed and established comprehensive clinical simulation teaching facilities, including simulated operating rooms, delivery rooms, and wards. By integrating these specialized training environments with systematic teacher training programs and an advanced intelligent interactive simulation system, we not only enhance the professional competencies of healthcare personnel but also cultivate their skills in cross-disciplinary collaboration and communication.



全人照護醫學教育 Holistic Care Medical Education



本醫院秉持全人照護之理念，積極推展創新醫學教育，透過多元且系統化的教學方案培育卓越醫療人才。除定期舉辦「全人健康照護經典講座」及「跨領域團隊合作照護訓練會議」外，更引進澳洲格里菲斯大學尖端的「續浸式臨床學習」(Clinical Learning Through Extended Immersion in Medical Simulation, CLEIMS)教育模式。此創新教學模式以全人照護為核心，整合身體、心理、靈性及社會等多面向照護概念，並結合跨專業團隊合作，匯集藥學、護理、營養、心理、社工、物理及職能治療等領域專業。在臨床模擬環境中，由經驗豐富的臨床教師引導學員與模擬病人深度互動，不僅能有效傳承專業知識與實務經驗，更能促進各醫事專業間的深度交流。

Upholding the philosophy of holistic care, KMUH has been actively promoting innovative medical education and cultivating outstanding medical talent through diverse and systematic teaching initiatives. In addition to regularly organizing holistic healthcare lectures and care training sessions for cross-disciplinary teams, the hospital has also introduced the Clinical Learning through Extended Immersion in Medical Simulation (CLEIMS) program from Griffith University in Australia. Centered on holistic care, this innovative teaching model integrates the physical, mental, spiritual, and social aspects of care; emphasizes cross-disciplinary team collaboration; and combines expertise from fields such as pharmacy, nursing, nutrition, psychology, social work, and physical and occupational therapy. In clinical simulation settings, experienced clinical teachers guide students in conducting in-depth interactions with simulation patients. This not only facilitates the effective transmission of professional knowledge and practical experience but also encourages meaningful exchange among healthcare personnel with different areas of expertise.

優良教學傳統與成效 Excellent teaching traditions and achievements

本醫院基於遠距醫療專科門診系統建置經驗，2021年起執行衛生福利部「偏遠地區遠距醫療建置計畫」，透過與偏遠地區中度級急救責任醫院及急診醫療站合作建立遠距醫療網絡，運用衛生福利部遠距醫療會診系統，建置急診遠距醫療會診流程。統計至2024年5月，共完成60例急診遠距會診，其中39例為急診(67%)、1例腦中風(1.7%)、17例緊急外傷(25.9%)、3例心肌梗塞(5.2%)。本醫院將持續與合作醫院推動急診遠距會診，期待可改善偏遠地區急診醫療資源不足問題。

Building on its time-honored teaching traditions, KMUH continues to inspire teaching enthusiasm among teachers and make significant investment in the development of innovative teaching methods and the design of intelligent teaching systems. The goal is to enhance teaching quality and learning effectiveness, while advancing healthcare quality and patient safety. With the aid of intelligent information technology and rigorous clinical training, the hospital continues to cultivate outstanding healthcare professionals. Over the past three years, our personnel across various healthcare professional categories have actively participated in competitions held by the National Healthcare Quality Awards, earning a total of 22 honors—including gold, silver, and bronze awards—in categories such as simulation, evidence-based medicine, and smart healthcare. These achievements stand as a testament to the hospital's excellence and effectiveness in clinical education.



善盡社會責任

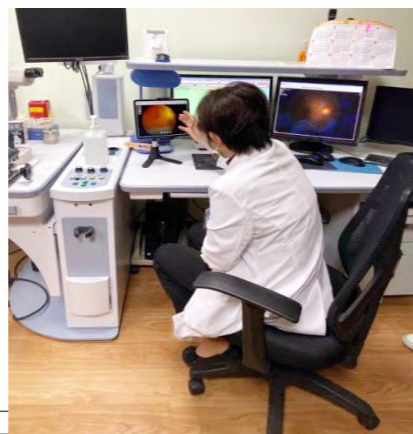
Fulfilling Social Responsibilities

全國首創5G遠距醫療

Taiwan's First 5G-enabled Telemedicine Services

隨著5G通訊技術發展，2020年高醫醫療團隊全國首創於臺東縣7鄉鎮，跨山從北端的長濱鄉、成功鎮、大武鄉、達仁鄉及跨海到綠島鄉、蘭嶼鄉2個離島導入5G遠距醫療，提供偏鄉民眾五官科(耳鼻喉科、皮膚科及眼科)遠距醫療專科會診服務，並將虛擬健保卡應用於遠距醫療，服務涵蓋範圍由臺東縣擴大至高雄市(茂林區、那瑪夏區)、屏東縣(滿州鄉、泰武鄉)，統計至2024年12月已提供超過9,715人次遠距專科門診會診服務，各衛生所滿意度皆達90%以上，2024年更將醫療服務觸角延伸至桃園市，秉持『哪裡需要醫療服務，高醫就往哪裡去!』。

With advancements in 5G communication technology, KMHU pioneered 5G-enabled telemedicine services in Taiwan in 2020, initially extending service coverage to seven townships in Taitung County, including Changbin, Chenggong, Dawu, and Daren on the far side of the Central Mountain Range, as well as Lyudao and Lanyu on the offshore islands. These services provide medical consultations in otolaryngology, dermatology, and ophthalmology. After integrating the virtual national health insurance card into telemedicine, service coverage was further expanded to Maolin and Namaxia Districts in Kaohsiung City, as well as Manzhou and Taiwu Townships in Pingtung County. As of December 2024, the hospital has provided medical consultations to over 9,715 individuals via telemedicine services, with a satisfaction rate exceeding 90%, as reported by each local public health center. In 2024, the hospital further expanded its services to Taoyuan City in northern Taiwan, staying true to its philosophy of "being wherever medical services are needed!"



未來急診：跨時空之醫療團隊照護

Emergency Care of the Future: Healthcare beyond Time and Space

本醫院基於遠距醫療專科門診系統建置經驗，2021年起執行衛生福利部「偏遠地區遠距醫療建置計畫」，透過與偏遠地區中度級急救責任醫院及急診醫療站合作建立遠距醫療網絡，運用衛生福利部遠距醫療會診系統，建置急診遠距醫療會診流程。統計至2024年5月，共完成60例急診遠距會診，其中39例為急診(67%)、1例腦中風(1.7%)、17例緊急外傷(25.9%)、3例心肌梗塞(5.2%)。本醫院將持續與合作醫院推動急診遠距會診，期待可改善偏遠地區急診醫療資源不足問題。

Building on its experience in establishing telemedicine specialist clinic systems, KMHU has been implementing the Ministry of Health and Welfare's Remote Area Telemedicine Development Project since 2021. In collaboration with intermediate emergency responsibility hospitals and emergency medical stations in remote areas, it utilizes the Ministry's telemedicine consultation system to develop standardized emergency consultation procedures for remote care. As of May 2024, the hospital had completed 60 emergency cases through telemedicine consultations. Among these, 39 cases (65%) were general emergencies, 1 case (1.7%) involved a stroke, 17 cases (28.3%) were traumatic injuries, and 3 cases (5%) involved myocardial infarction. KMHU will continue collaborating with responsibility hospitals to promote emergency teleconsultation to address the shortage of emergency healthcare resources in remote areas.

▶ 會診前作業 —▶ 會診中作業 —▶ 會診後作業



1. 以最小變動為原則

- ◆ 開設虛擬遠距診間與一般急診就醫流程相同
- ◆ 維持原有醫師操作介面，減少系統使用隔閡



2. 資訊即時溝通無礙

- ◆ 快車道：資訊即時分享
- ◆ 慢車道：HIS、PACS資料傳輸
- ◆ 定點+行動床邊會診溝通



3. 紀錄留存及團隊接力

- ◆ 會診紀錄拋轉、留存
- ◆ 急診會診醫令健保申報
- ◆ 虛擬門診轉歸啟動綠色通道

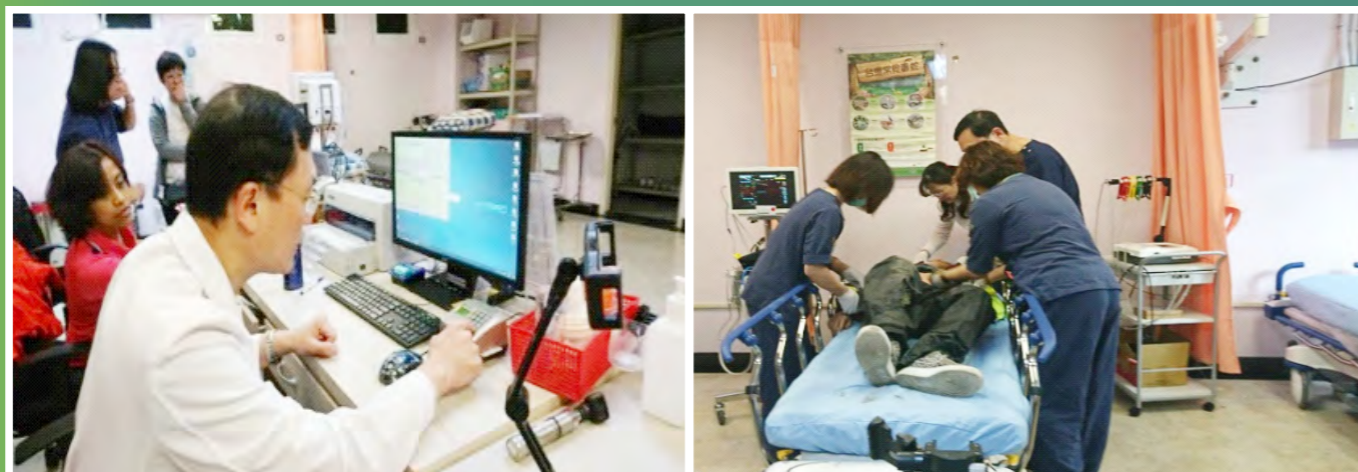


守護南迴偏鄉健康

Guarding the Health of Remote Areas in Southern Taiwan

為提升南迴路線的緊急醫療量能，高醫醫療團隊自2020年1月份起於大武衛生所設立緊急救護站，發揮醫學中心協助提升偏遠地區醫療的角色與主動承擔社會責任，提供24小時無論是假日及夜間專人照護，使大武地區及偏鄉地區之居民享有完善之醫療服務，提升在地醫療服務量能、強化緊急醫療服務，增加民眾就醫之可近性。截至2024年12月止，提供4176人次醫療照護服務，除縮短每趟就醫時間約60分鐘車程，亦提供醫學中心醫療團隊之緊急醫療救護。

To enhance emergency capacity in southern Taiwan, KMH established an emergency station at the Dawu Public Health Center in January 2020, fulfilling its social responsibility as a medical center by improving healthcare services in remote areas. This emergency station provides 24/7 healthcare services to residents of Dawu Township and surrounding areas, ensuring access to healthcare by enhancing local healthcare capacity and strengthening emergency services. As of December 2024, the emergency station had provided healthcare services to 4,176 individuals, reducing travel time to medical care by approximately 60 minutes while ensuring access to both emergency and general healthcare services delivered by our medical teams.



愛的起點~臺東縣大武鄉

Where Love Begins: Dawu Township, Taitung County

高醫醫療團隊依據臺東縣大武鄉當地醫療需求，提供小兒科、心臟內科、腎臟內科、精神科、肝膽胰內科、胃腸內科、骨科、眼科、乳房外科及復健科共10個專科醫療門診服務。自2019年2月份起，平均每月有14-16位醫師提供專科門診服務，截至2024年12月已累積提供1,746診次、16,122人次專科門診服務，落實「促進健康平權」的醫療服務理念。

To meet the healthcare needs of residents in Dawu Township, Taitung County, KMH offers outpatient services across 10 specialist fields, including pediatrics, cardiology, nephrology, psychiatry, hepatobiliary and pancreatic medicine, gastroenterology, orthopedics, ophthalmology, breast surgery, and rehabilitation. Since February 2019, an average of 14 to 16 physicians have provided outpatient services each month. As of December 2024, our medical teams had completed 1,746 consultations and served 16,122 individuals, embodying the hospital's commitment to promoting health equity.



國際交流與合作

International Exchanges and Collaborations



國際醫療合作-立基·越南

International Medical Collaboration: Starting in Vietnam

本醫院2022年承辦衛生福利部「新南向醫衛合作與產業發展」分項計畫，負責越南峴港以南區域，於各類交流活動中搭起兩國產官學界間之溝通橋梁，提供當地病人及台商僑胞更多之就醫資源、醫事人員培訓，2022年與「學術暨醫藥技術高地」的胡志明市醫藥大學附設醫院(UMC)結盟。2023年與「地理高地」多樂省省會之邦美蜀醫藥



大學醫院(BUH)結盟並整合國際資源協助建構臨床技能訓中心；2024年促成本校與該大學(BMTU)簽約並循環架構「KMU臨床技能訓練與台灣醫衛展示中心」。

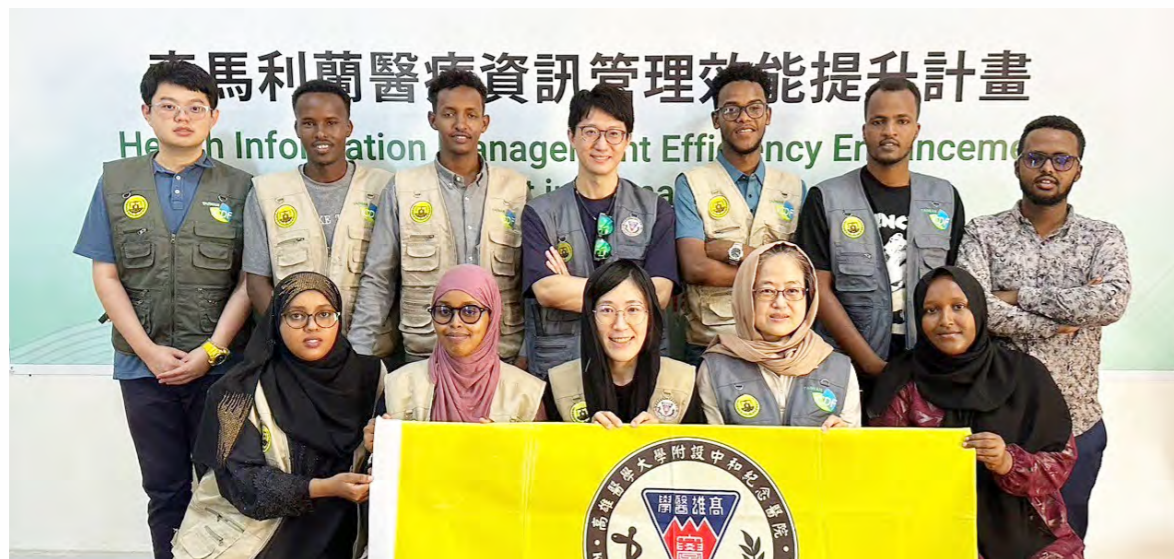


In 2022, KMUH was in charge of engaging with Da Nang and the regions to its south as part of a sub-project under the Ministry of Health and Welfare's New Southbound Medical Collaboration and Industrial Development Project, facilitating

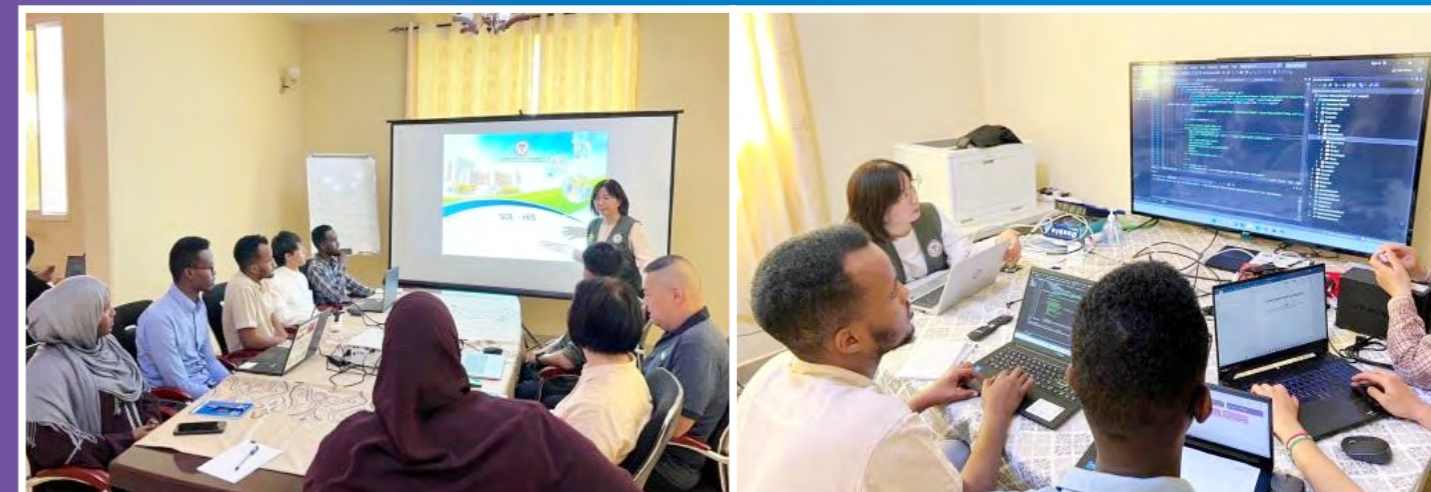


communication among industries, government agencies, and academic institutions between the two countries. Through this platform, the hospital has been providing medical resources to local patients, Taiwanese businesspeople, and expatriates in these areas of Vietnam, while also offering training to local healthcare personnel. That same year, the hospital formed a partnership with the University Medical Center (UMC) of the University of Medicine and Pharmacy at Ho Chi Minh City, a leading institution known for its academic and medical technology excellence. In 2023, KMUH formed a partnership with Buon Ma Thuot Medical University Hospital (BUH) in the capital of Dak Lak Province in the Central Highlands, integrating international resources to assist in the establishment of a clinical skills training center. In 2024, the hospital signed an agreement with Buon Ma Thuot Medical University (BMTU) and continues to promote the development of the KMU Clinical Skills Training and Taiwan Medical and Healthcare Demonstration Center.

國際醫療合作-前進·東非索馬利蘭
International Medical Collaboration: Extending
to Somaliland in East Africa



本醫院與國際合作發展基金會自2021年起與索馬利蘭衛生部合作，推動婦幼健康與醫療資訊系統提升計畫，展現卓越成效：(1)婦幼健康提升計畫：推行媽媽手冊及電視衛教等創新措施。成功協助索國降低孕產婦死亡率17.24%及早期新生兒死亡率65.57%。(2)醫療資訊效能提升計畫：為索國4家醫院安裝客製化醫療資訊及資料交換系統，協助就診病歷電子化且實現就醫資訊24小時內上傳至衛生發展部。每年派遣資訊專家提供技術支援與培訓，並接待索國3位衛生發展部高階官員來院學習醫療管理。計畫在疫情挑戰下仍穩步推進，顯著提升索馬利蘭醫療服務效能與管理能力，為國際合作樹立典範。



Since 2021, KMHU and the Taiwan International Cooperation and Development Fund have been collaborating with the Ministry of Health of Somaliland to improve maternal and child health and healthcare information systems in the country. The partnership has achieved outstanding results. In programs aimed at enhancing maternal and child well-being, the team introduced innovative initiatives such as distributing maternal health booklets to pregnant women and delivering health education via television broadcasts. These efforts have led to a 17.24% reduction in maternal mortality and a 65.57% reduction in neonatal mortality. As part of efforts to improve the effectiveness of healthcare information, customized healthcare information and data exchange systems have been implemented in four hospitals in Somaliland, enabling the digitalization of medical records and the submission of patient data to the Ministry of Health Development within 24 hours. Each year, KMHU dispatches information experts to provide technical support and training and hosts three senior officials from the Ministry of Health Development of Somaliland for hands-on learning in healthcare management at the hospital. During the pandemic, the team continued to implement the programs despite numerous challenges, significantly enhancing the effectiveness of healthcare service management in the country and setting a model for international healthcare collaboration.

獲獎榮譽 Awards and Honors

本醫院自2005年起配合醫療外交投入國際醫療援助，開始與世界各國醫院建立諸多臨床技術交流合作，特別是協助開發中國家，從非洲、大洋洲、中南美洲到東南亞，都有高醫的足跡，這些亮眼的成果，獲得國際醫療衛生促進協會辦理的第九屆國際醫療典範獎團體獎。

In line with the government's health diplomacy policy, KMHU has actively engaged in exchanges and collaborations with hospitals around the world, focusing on medical aid and clinical skills development. The hospital's efforts are particularly evident in developing countries across Africa, Oceania, Central and South America, and Southeast Asia. These outstanding achievements earned KMHU the Group Award at the 9th International Medical Model Awards presented by the Taiwan Global Healthcare Association.

