



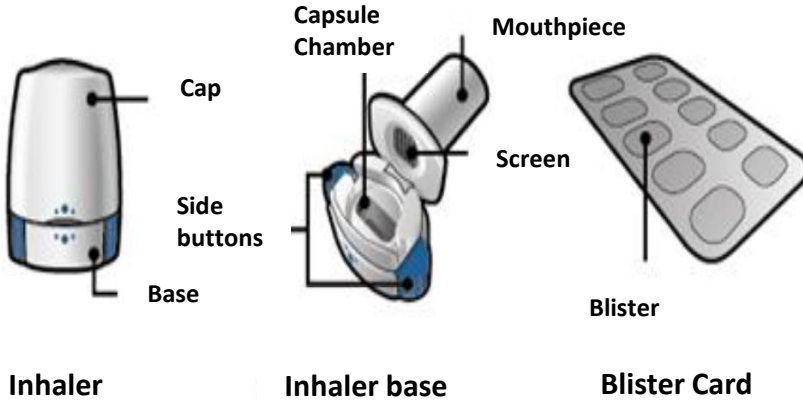
# Onbrez Breezhaler<sup>®</sup>

(Indacaterol 150 mcg/dose, 30 dose)

For airflow obstruction in patients with chronic obstructive pulmonary disease (COPD)



## Your Onbrez Breezhaler Inhaler pack contains:



- One Onbrez Breezhaler inhaler
- One or more blister cards, each containing either 6 or 10 capsules

The inhaler should be discarded after 30 days of use.

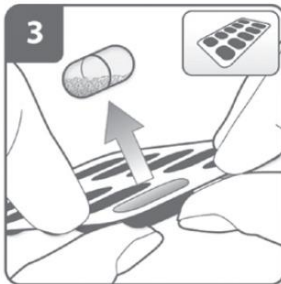
## Instructions for use:



**1** Pull off cap.

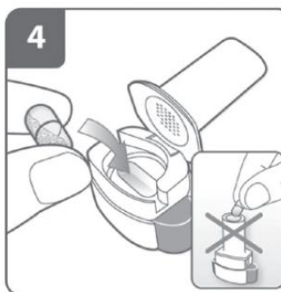


**2** Open inhaler.



**3** Remove one capsule from the blister.

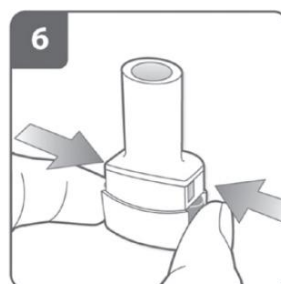
- Do not swallow the capsule.



**4** Insert capsule.



**5** Close inhaler.



**6** Pierce capsule once.

- Hold the inhaler upright. Pierce capsule by firmly pressing both side buttons at the same time.
- You should hear a noise as the capsule is pierced.



# Onbrez Breezhaler<sup>®</sup>

(indacaterol 150 mcg/dose, 30 dose)

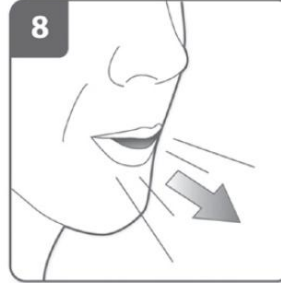
For airflow obstruction in patients with chronic obstructive pulmonary disease (COPD)



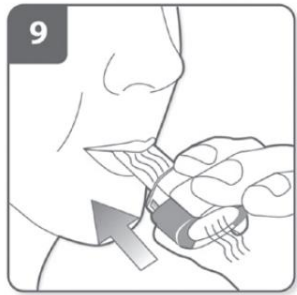
## Instructions for use:



**7** Release side buttons.

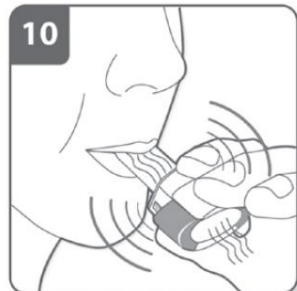


**8** Breathe out fully.



**9** Inhale medicine deeply.

- Hold the inhaler as shown in the picture.
- Place the mouthpiece in your mouth and close your lips firmly around it.
- **Do not press the side buttons.**
- Breathe in quickly and as deeply as you can.



**10** Hear a whirring noise.

- During inhalation you will hear a whirring noise.
- You may taste the medicine as you inhale.



**11** Hold breath.

- Hold your breath for up to **5-10 seconds.**



**12** Check capsule is empty and remove empty capsule.

- Put the empty capsule in your household waste.
- Close the inhaler and replace the cap.

## Cleaning the inhaler:

- Wipe the mouthpiece inside and outside with a **clean, dry, lint-free cloth** to remove any powder residue. Never wash your inhaler with water.